



Air Techniques, Inc.

CEMS

CONTINUOUS EMISSIONS MONITORING SYSTEMS

2999 Johnson Ferry Rd. Marietta, GA 30062

(770) 518-7200

Air Techniques, Inc. CEM Systems

INDUSTRIAL & UTILITY CONSTRUCTION

ATI CEM Systems are built specifically for the harsh Industrial and Utility environments and able to withstand the conditions from the hot and humid South to bitter cold in the upper Midwest. Our quality is unmatched and our robust systems are designed for longevity, durability & ease of service.



SHELTER

The ATI CEMS Shelter standard construction is sturdy structural steel framing, painted steel siding, aluminum checker plate flooring, climate controlled, pre-piped & pre-wired ready to set on customer foundation.

CEM Systems - Interior

DESIGNED WITH SERVICE IN MIND

Each ATI CEMS cabinet and interior is designed with service in mind. Industry best practices include Panduit and Prodigious labeling as our standard. This results in an open and fully accessible installation, longer service life & ability to more quickly troubleshoot and access system components.

Our industrial grade panels include touch screen operation and the control and data system is designed using current technologies (i.e. Win 10/11, DisplayLink Touchscreens, open standards for communication protocols)

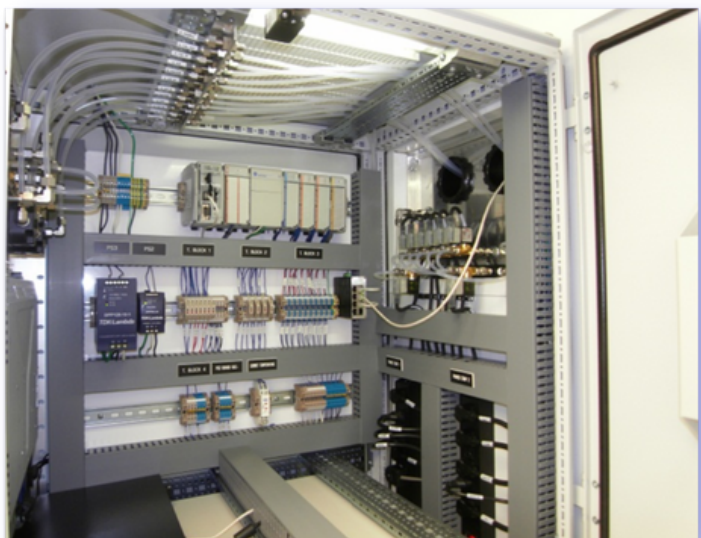


FLOORS

Sturdy checker plate flooring is standard.

ACCESS

Access to system components is paramount to every ATI CEMS. While not typically specified, ATI designs our systems with the customer and service in mind to provide a clear accessible path for every component.



CEM Systems - Interior

SHOP WIRED & PLUMBED

We use corrosion resistant boxes with integrated cooling or heat where applicable. All controls and power are clearly labeled and accessible. Our standard is to use controllers that can communicate to our customer's data system in intelligent ways such as Ethernet IP or other industry standard communication protocols (CIP, Modbus, OPC, etc.). We use conservative physical layouts that allow for ease of wiring for analog and digital I/O as well as system power.



CLIMATE

Heat is often the destruction of integrated circuits. With this in mind we look to efficiency to maximize heat dissipation. Our typical design utilizes 24VDC power and can therefore run a full operational system on just a few hundred watts (inclusive of data and control). Minimizing loads and efficiently using space leads to less need for interconnection wiring which means better circulation and cooling in the cabinets and auxiliary equipment. This allows us to minimize the load in summer and allows for intentional control of the temperature in the winter.

CEM Systems - Functional Acceptance Test

FUNCTIONAL ACCEPTANCE TEST (FAT)

Air Techniques has facilities that make it easy and accessible for functional testing of your CEMS at any point in the production. ATI performs acceptance testing throughout the integration of your system. Upon completion, every Air Technique CEM system includes a thorough system checkout and a FAT at our Marietta facility. Our streamlined FAT process provides for a smooth and on-schedule installation.



CEM Systems - Installation

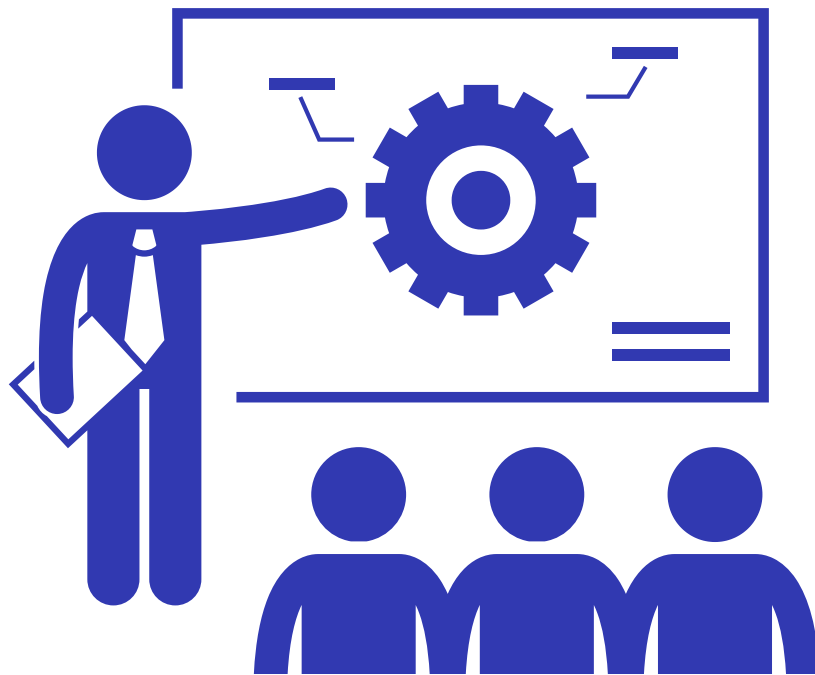
INSTALLATION

Air Techniques prefers to include onsite installation to our customers to ensure a successful and timely start-up. Our trained technicians offer unmatched service and provides the customer with a liaison that is knowledgeable of the entire system. For a typical 2 point, 2 parameter setup ATI personnel would typically be onsite for one week to ensure that the system operates as designed and provides assistance to customer personnel that are charged with operation of the CEMS.



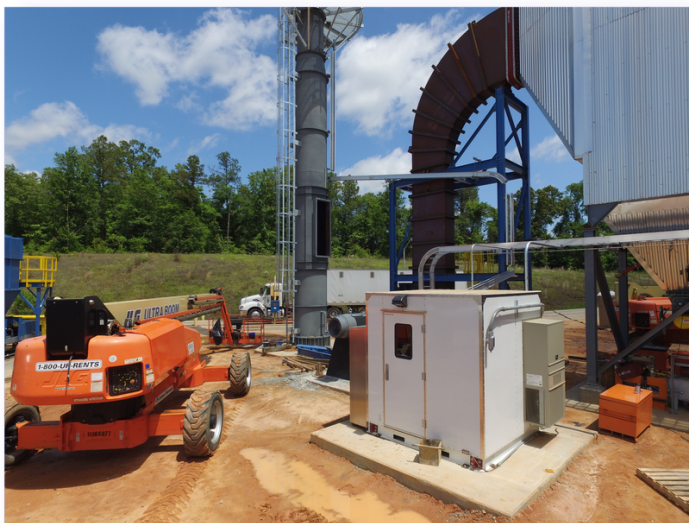
TRAINING

Air Techniques provides training (either onsite or remote) as to the functioning of the system so that those persons dealing with this are as knowledgeable as they can be in the CEMS. The training typically breaks into three types. One being the overall function of the system. This type of knowledge is intended for any persons that will have interaction with the CEMS and should include functional overview, what to check to ensure proper operation, and what to do in case of alarm. The next type focusing on the physical functioning of the CEMS. This should include gas sampling system, analyzers, expected maintenance, and data path. The third type is based in the data. This includes the data structure / reporting system, what data is required for compliance, how to maintain and ensure the data is collected appropriately, and the function and operation of any onsite backup solution.



CEM Systems - Efficiency in Mind

FROM OUR SHOP PACKAGED & DELIVERED TO
YOUR SITE



CEMS Maintenance Service

ATI'S CEMS SERVICES

Our field service team is your go-to solution leading to dependable operation and minimizing unplanned downtime. We recommend quarterly inspections and service to ensure your CEM system operates with the highest uptime and repeatability.


Air Techniques has the resources and expertise to assist your team with immediate solutions and results for trouble-free operation. Issues that can potentially interrupt reliable operation of the CEMS can be avoided with the assistance of our attentive trained service technicians and implementation of customer preventative maintenance program that we will help you develop.



CEMS Reporting Service

ATI'S REPORTING SERVICES

Air Techniques provides a full menu of reporting services. These reporting services ensure complete compliance with your individual Title V air permit requirements. These include, but are not limited to, CFR (Code of Federal Regulations) Part 60, Part 63, Part 75, or Part 503 as well as specific state regulations nationwide. We have over 30 + years experience in authoring quarterly CEMS reports for our customers. Our EPA reporting expertise and efficiency make this process less painful and return you, the customer, to operating your plant.



SAMPLING AND MONITORING SYSTEMS
2999 JOHNSON FERRY RD. - MARIETTA, GA 30062 - 770-518-7200 - FAX 770-518-0661

**QUARTERLY REPORT OF THE GASEOUS EMISSIONS AND CEMS
PERFORMANCE FOR THIRD QUARTER 2011**

AT
[REDACTED]

RABUN GAP, GEORGIA

WOOD-FIRED BOILER CEM SYSTEM (SOURCE CODE WB)
AIR QUALITY PERMIT NO. 4911-241-0018-E-01-0

PREPARED BY:
AIR TECHNIQUES, INC.
M. Hall
MICHAEL L. HALL
DIRECTOR, SAMPLING AND MONITORING

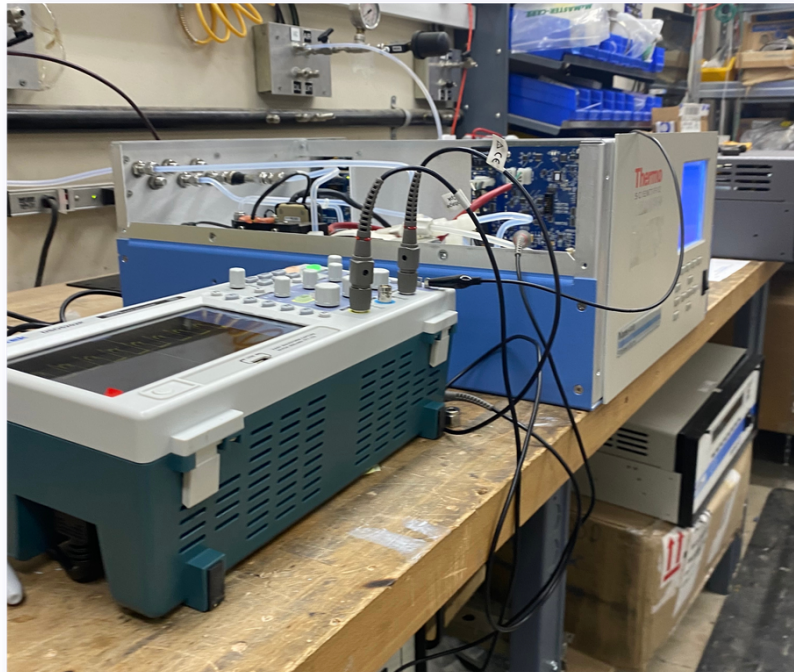
REVIEWED BY:
[REDACTED]

ATI'S Additional Services

IN HOUSE:

- ANALYZER REPAIRS
- PROGRAMMING
- GENERAL REPAIR (SHOP TIME)
- REMOTE SYSTEM SUPPORT

Air Techniques provides a full menu of services. These services include analyzer repairs, programming (DAHS, PLC's & COMS), general repairs and remote system support. Our CEMS techs are available by phone 24/7 for all of your CEMS needs & questions.



ATI'S Other Services

CEMS PART ORDERS

Air Techniques provides part orders for all your CEMS needs. ATI works with an array of companies to provide you with the best parts to keep your CEMS running smoothly.

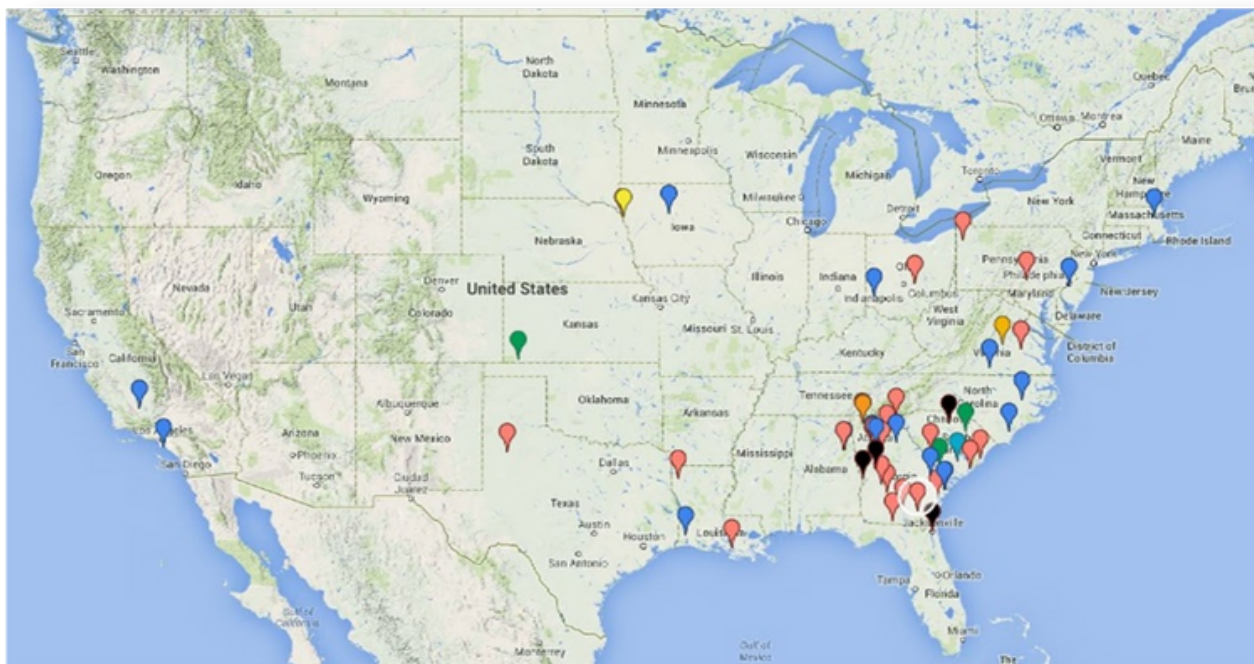
PREMIER PARTNERS:



Installs

30+ YEARS OF EXPERIENCE

We have been installing, operating and servicing CEM systems for over 30 years. Our install base with focus on the southeast extends throughout the country. We have extensive knowledge of various types of applications and the correct application of tools to each of them. Our Services include all things needed for Procedure 3 Compliance.

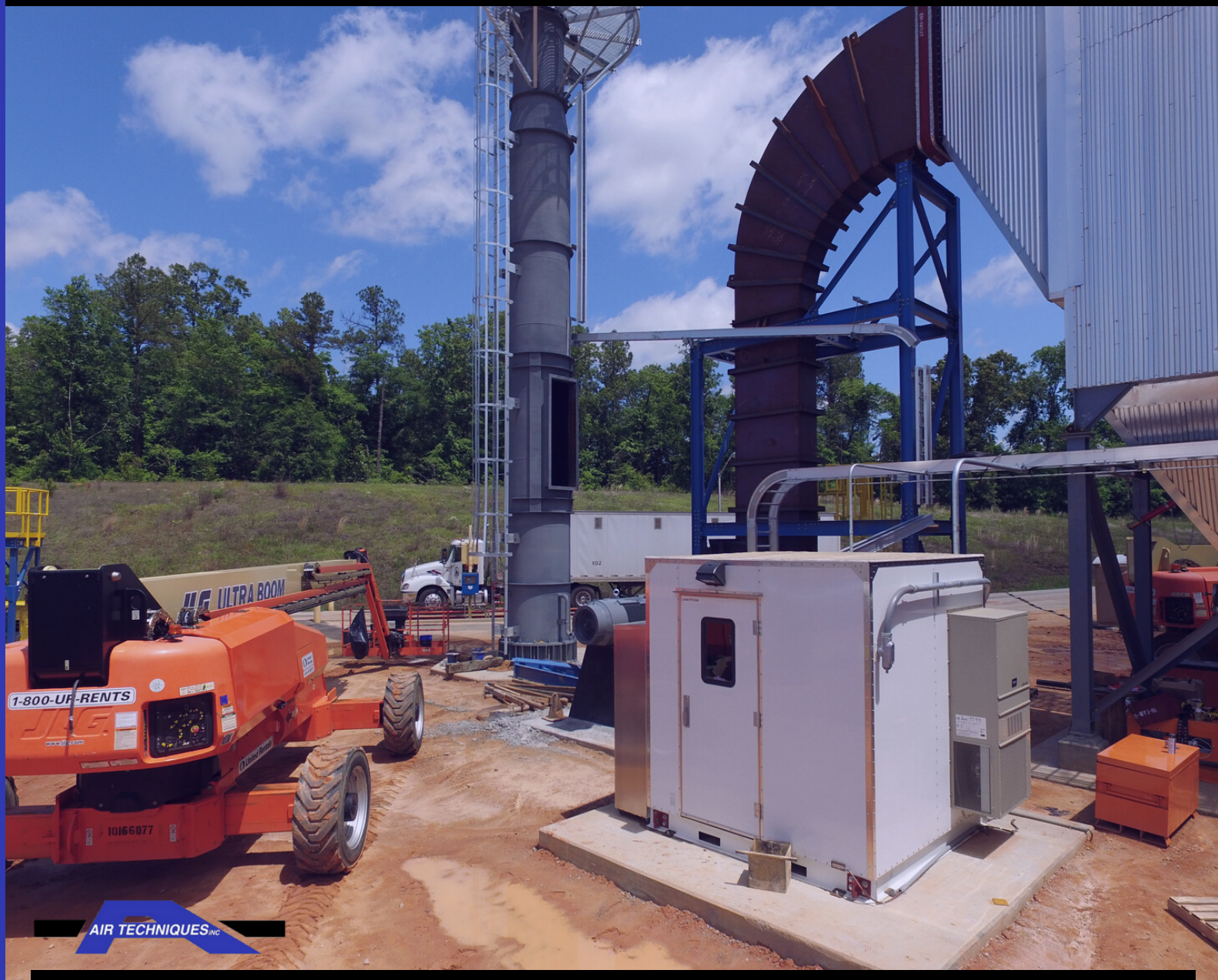


We have made our way being a custom integrator that allows the customer to determine preferences and we bring the expertise to ensure that the system will both meet the compliance requirements and provide for excellent service.

Air Techniques, Inc. takes pride in providing our customers with a custom CEMS specific to each air permit and emission monitoring requirements. Our highly trained personnel, service technicians, engineers and designers ensure long term reliability and operation of our customer systems.

Please let us know how we can help you with any new or existing systems and we look forward to being of service.

Jeff Wheeler
CEMS Managing Director
Air Techniques, Inc.
(770)518-7200 ext. 524
jwheeler@airtechniquesinc.com



AIR TECHNIQUES, INC.

CEMS STANDARD LABOR RATES - 2022

- **Air Techniques** offers the following standard Labor rates to our non-contracted customers. Prices are for labor & travel only.
- Pricing based on traditional workweek M-F 6a-7p, Work outside normal hours or Saturday at 1.5x. Work on Sunday at 2x.
- Prices are quoted Net 30 days per standard terms and conditions. We gladly accept credit card payments with a 3% processing fee.

Daily Travel

Overnight: Includes time on site, travel time and expense, per person, per day. Daily travel rates are billed in half day increments (i.e. ½ day travel to site, 1 day work on site, ½ day back to Air Techniques, would be billed as 2 days)

\$1,975

**An expedite fee of \$1,500 applies to any trip scheduled less than 15 days in advance.*

In House

Programming: Billed hourly, 2 hour minimum **\$165**

Analyzer Repair: Billed hourly, 2 hour minimum **\$122**

General Repair (Shop Time): Billed hourly, 2 hour minimum **\$98**

Remote System Support : Billed hourly, 2 hour minimum **\$110**



AIR TECHNIQUES, INC.

CEMS TERMS OF SERVICE - 2022

By utilizing Air Techniques service and/or purchasing parts and/or services from us, you engage in our "Service" and agree to the following terms and conditions ("Terms of Service", "Terms"), including those additional terms and conditions and policies referenced. These Terms of Service apply to all users, including without limitation users who are vendors, customers, merchants, and/or contributors of content.

SECTION 1 - PURCHASING TERMS

- **Orders shipped from Air Techniques will include a packaging & handling fee of:**
 - *small box* - \$4.95 *Large box* - \$9.95 *Custom/Oversized* - by quote
- **Any order below the dollar amount of \$150.00 is subject to a \$50.00 fee and will be added to the amount to the lesser of \$150.00 but not to exceed.**
- **Prices for our products are subject to change at any time.**
- **All order over \$5,000.00 are subject to a 40% invoice upon acknowledgement of placed order.**
- **Payment terms are NET 30.**
- **Payments are made by check or credit card.**
- **Credit card payments will be subject to a 3% processing fee.**
- **Partial invoices, at Air Techniques discretion, may be necessary and will be stated on order acceptance prior to fulfillment of order.**
- **Lead times are quoted for 7-14 business days. Lead times are subject to change.**

SECTION 2 - GENERAL CONDITIONS

- **We reserve the right to refuse service to anyone for any reason at any time.**
- **We don't supply any equipment of service to terrorists or enemies of the United States of America**

SECTION 3 - MODIFICATIONS TO THE SERVICE & PRICES

- **Prices for our products/services are subject to change.** We reserve the right at any time to modify or discontinue the service (or any part or content thereof) at any time. We shall not be liable to you or to any third-party for any modification, price change, suspension or discontinuation of the service.

SECTION 4 - PRODUCTS OR SERVICES (if applicable)

- **Any applicable warranty must be outlined in quote from Air Techniques**
- **We are not liable for the actions of customers with the products we provide**

SECTION 5 - ACCURACY OF BILLING & ACCOUNT INFORMATION

- **You agree to provide current, complete & accurate purchase & account information for all purchases made. You agree to promptly update this information when it changes**

